

TWG - MECHANICAL TORQUE MULTIPLIERS



Torque capacities up to 10000 Nm

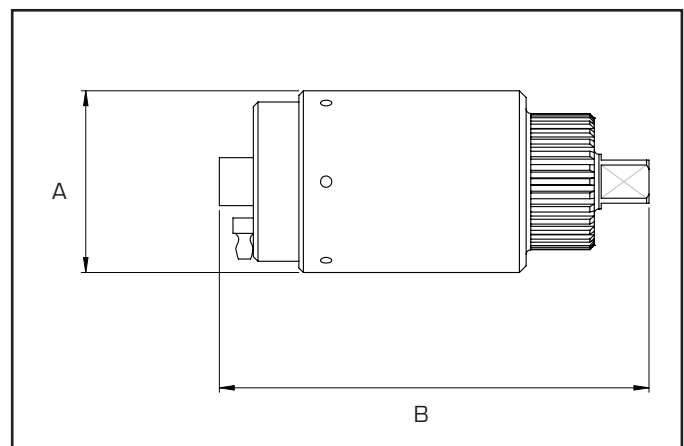
Lightweight aluminium housing

Supplied complete with reaction arm

The Hi-Force TWG range of mechanical torque multipliers offers output torque capacities from 50 to 10000 Nm with multiplication ratios of 1:4, 1:5, 1:5.5, 1:16, 1:18 and 1:28.5. Available in a choice of 6 models, the torque multipliers incorporate a high performance aluminium housing making them ideal for use in bolting applications in several industries including construction, railways, ship building, machinery and plant engineering and heavy vehicle workshops.

All models are fitted with an offset reaction arm while TWG40, TWG60 and TWG100 are additionally fitted with anti-wind up ratchet and non-destructive 'slipper' overload safety mechanism for gear protection. Recommended Hi-Force manual torque wrenches for use with Hi-Force mechanical torque multipliers are detailed on page 70 of the catalogue.

- Single stage planetary gear in models up to 2800 Nm
- Two stage planetary gear in models up to 10000 Nm
- Output square drives of 3/4", 1" and 1 1/2"



Model number	Torque capacity		Multiplication ratio	Input square drive	Output square drive	Recom. torque wrench	Outside dia mm A	Overall height mm B	Weight kg
	Nm	lbf.ft							
TWG13	50 - 1300	40 - 950	1:5	1/2"	3/4"	TWM300	80	133	1.3
TWG20	100 - 2000	70 - 1500	1:4	3/4"	1"	TWM550	88	131	1.8
TWG28	500 - 2800	400 - 2050	1:5.5	3/4"	1"	TWM550	106	146	2.4
TWG40	500 - 4000	400 - 2930	1:16	1/2"	1"	TWM300	88	227	4.2
TWG60	650 - 6000	500 - 4400	1:18	3/4"	1 1/2"	TWM400	102	256	6.6
TWG100	1000 - 10000	700 - 7330	1:28.5	3/4"	1 1/2"	TWM400	142	292	10.9